

100
0 10
Millimetres

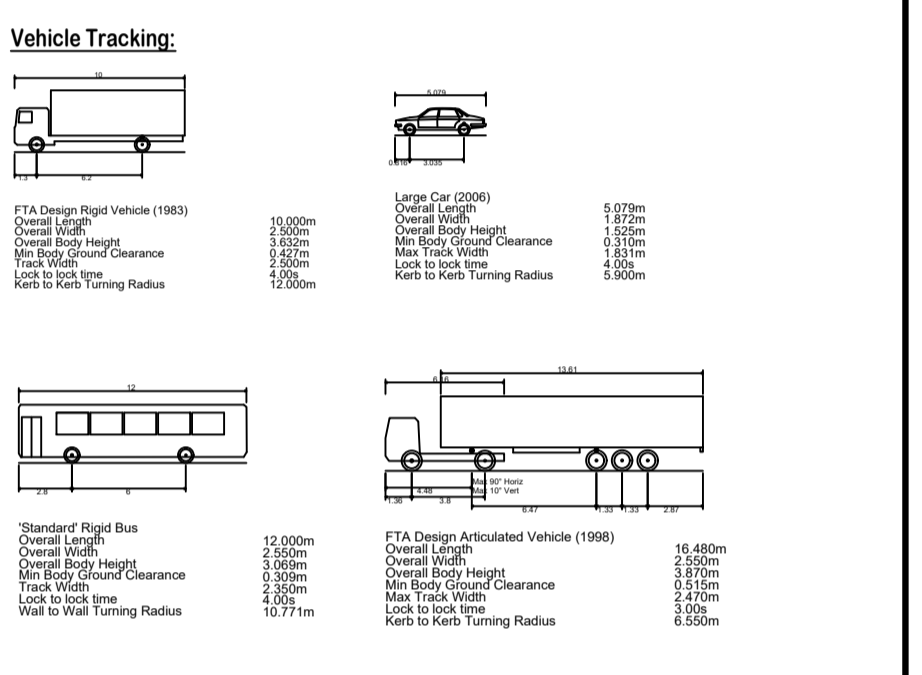
MEASUREMENTS NOT INCLUDED IN DIMS SHOWN :
MILESTONE WIDTH 200mm

TFL SIGNAL
REF: 23/186

DO NOT SCALE

- NOTES:**
- IT IS THE CONTRACTORS RESPONSIBILITY TO CHECK THE LOCATION OF THE EXISTING STATUTORY SERVICES PRIOR TO CONSTRUCTION. PARTICULAR ATTENTION IS DRAWN TO THE "NEW ROADS AND STREET WORKS ACT 1991".
 - THIS DRAWING IS A GENERAL ARRANGEMENT AND NOT FOR CONSTRUCTION PURPOSES.
 - REFER TO THE DRAWINGS REGISTER FOR THE FULL LIST OF DETAILED DRAWINGS.
 - ALL DIMENSIONS ARE IN METRES UNLESS OTHERWISE SPECIFIED. TRAFFIC SIGNAL POLES SHOWN INDICATIVE ONLY. SIGNALS TO BE DESIGNED BY TFL.
 - CYCLE STAND LOCATION TO BE CONFIRMED ON SITE BY ENGINEER.
 - NEW BUS SHELTER AND BUS STOP FLAG TO BE PROVIDED BY OTHERS. EXACT LOCATIONS TO BE AGREED ON SITE WITH TFL.
 - NEW BUFF PAVING AT BUS STOP LOCATIONS EXACT LOCATION TO BE DETERMINED BY TFL.
 - REFER TO DRAWING RBKM-H-ATK-HML-EWL-DE-D-0003-STANDARD DETAILS FOR MILESTONE DETAILS.

- Key:**
- MILESTONE DEMARCATION END BLOCKS
 - MILESTONE DEMARCATION INTERNAL UNIT BLOCKS
 - NEW PCC TACTILE TRAMLINE PAVING (BUFF) 400x400x65mm
 - NEW MARSHALLS CONCRETE DEMARCATION PAVING 200x200x80mm
 - NEW KERB LINE (SILVER GREY GRANITE)
 - EXTENT OF EXISTING PRIVATE VEHICLE ACCESS POINTS
 - NEW BUS SHELTER AND BUS STOP FLAG TO BE PROVIDED BY OTHERS. EXACT LOCATIONS TO BE AGREED ON SITE WITH TFL
 - BUS SHELTER
 - BUS STOP
 - BUFF SURFACING AT BUS STOP LOCATION EXACT LOCATION TO BE DETERMINED BY TFL
 - EXISTING GULLY
 - NEW PREFORMED CONCRETE TRAPPED GULLY POT (TO NOTE 7) WITH CLASS D400 GRATING AND FRAME (TO NOTE 4). REFER TO DRAINAGE SCHEDULES FOR COVER LEVELS AND COORDINATES.



SAFETY, HEALTH AND ENVIRONMENTAL INFORMATION
In addition to the hazards/risks normally associated with the types of work detailed on this drawing, note the following:

CONSTRUCTION

MAINTENANCE/CLEANING

DECOMMISSIONING/DEMOLITION

It is assumed that all works will be carried out by a competent contractor working, where appropriate, to an approved method statement

Rev.	Date	Description	By	Chk'd	App'd
P6	16.07.20	COVID 19 RE-DESIGN	JA	PE	CC
P5	26.06.20	COVID 19 RE-DESIGN	JA	PE	CC
P4	22.06.20	COVID 19 RE-DESIGN	JA	PE	CC
P3	19.06.20	COVID 19 RE-DESIGN	JA	PE	CC
P2	16.06.20	COVID 19 RE-DESIGN	JA	PE	CC
P1	29.05.20	COVID 19 RE-DESIGN	JA	PE	CC

Drawing Status: **COVID 19 RE-DESIGN** Suitability: **S0**

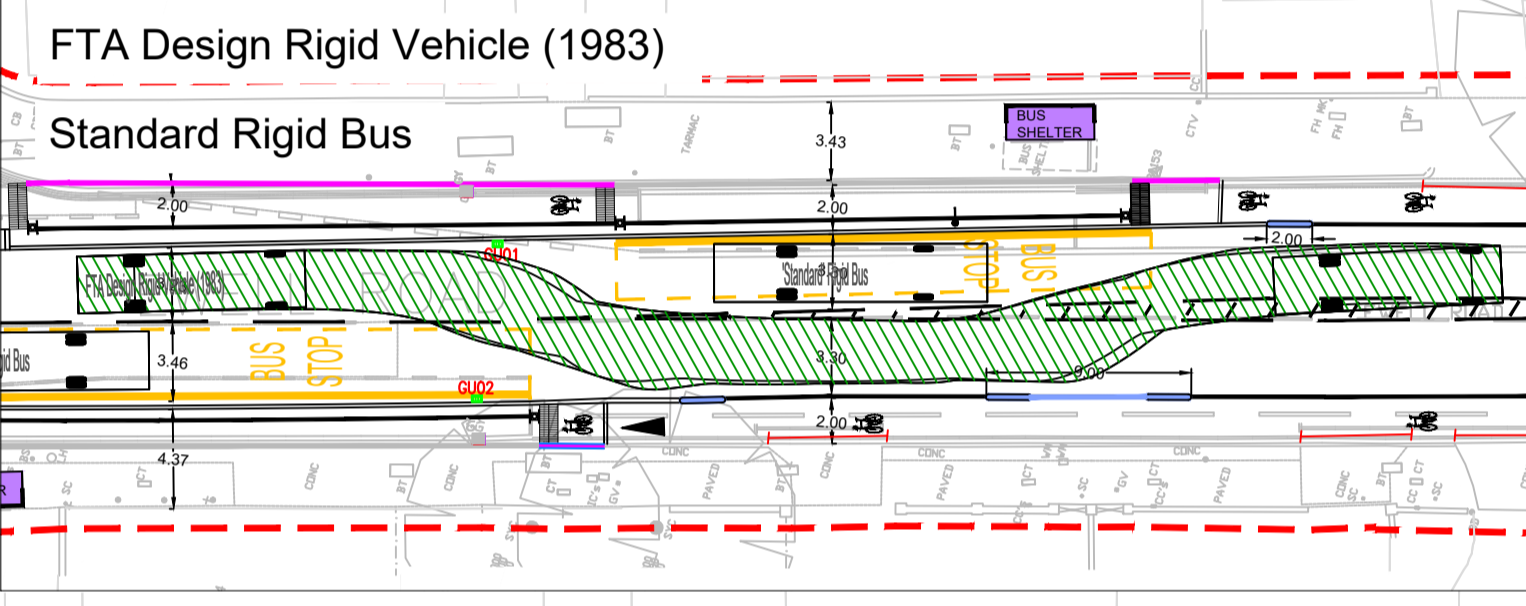
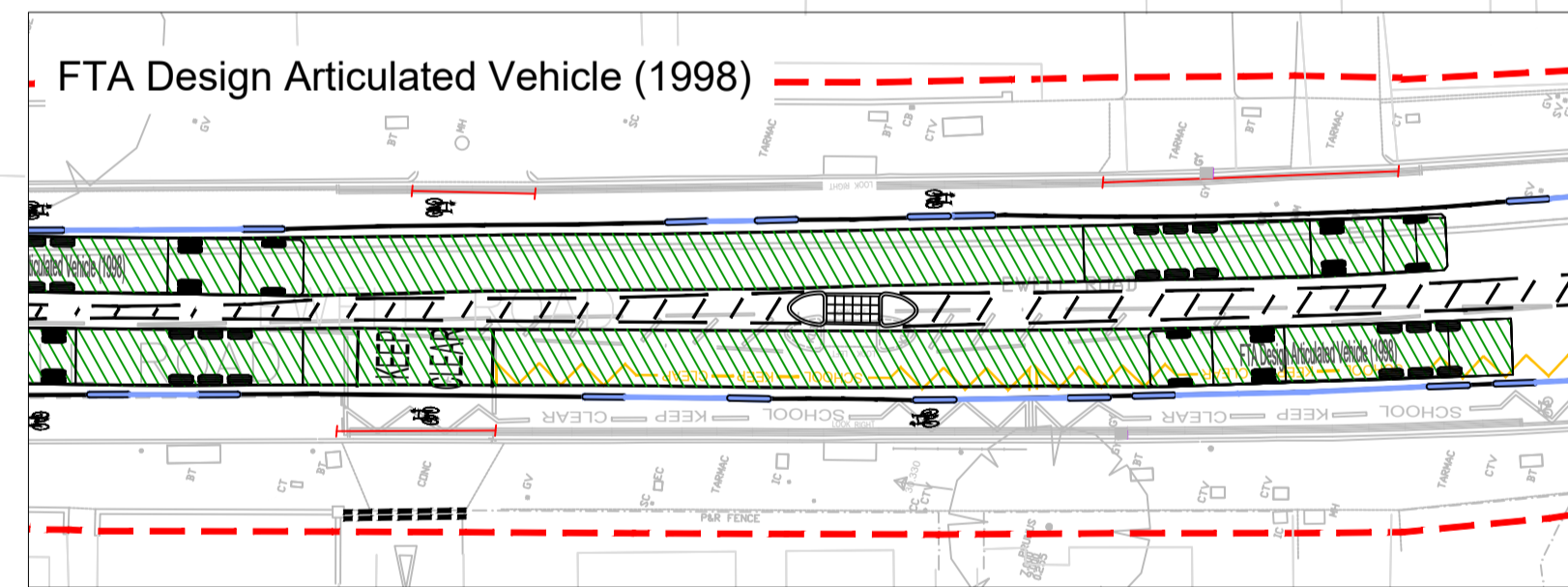
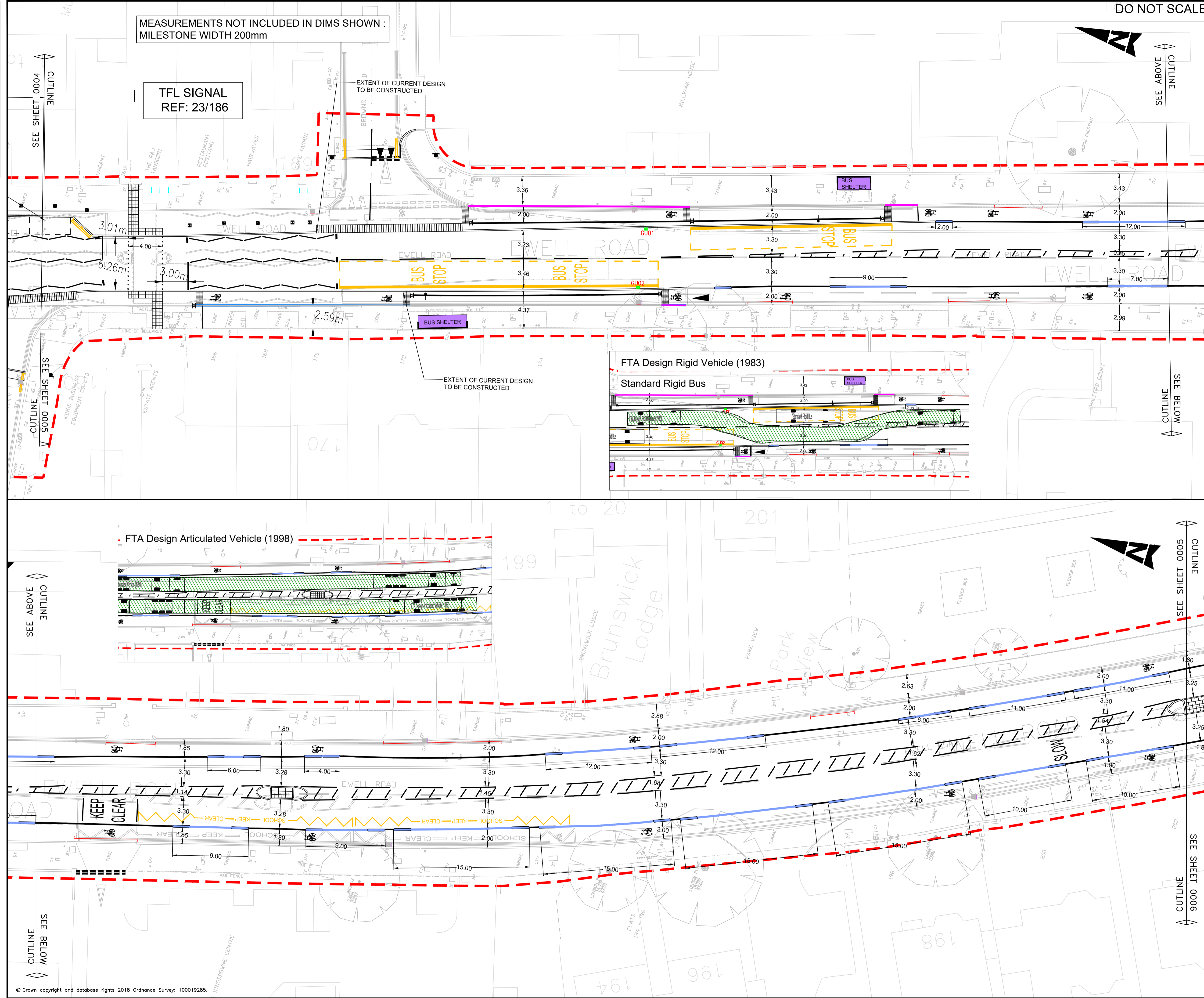
ATKINS
Euston Tower
286 Euston Road
London
NW1 3AT
Tel: +44 (0)2071 212000
Fax: +44 (0)2071 212111
Copyright © Atkins Limited (2018) www.atkinsglobal.com



Project Title: **KINGSTON MINI HOLLAND LOT 2**

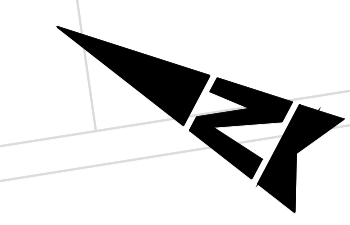
Drawing Title: **EWELL ROAD COVID 19 RE-DESIGN SHEET 5 OF 13**

Scale	Designed	Drawn	Checked	Authorised
1:200	JA	JA	PE	CC
Original Size	Date	Date	Date	Date
A1	29.05.20	29.05.20	29.05.20	29.05.20
Drawing Number	Originator	Volume	Project Ref. No.	Revision
MHL2	ATK	HGN	5141484	
EWL	DR	D	0005	P6
Location	Type	Role	Number	

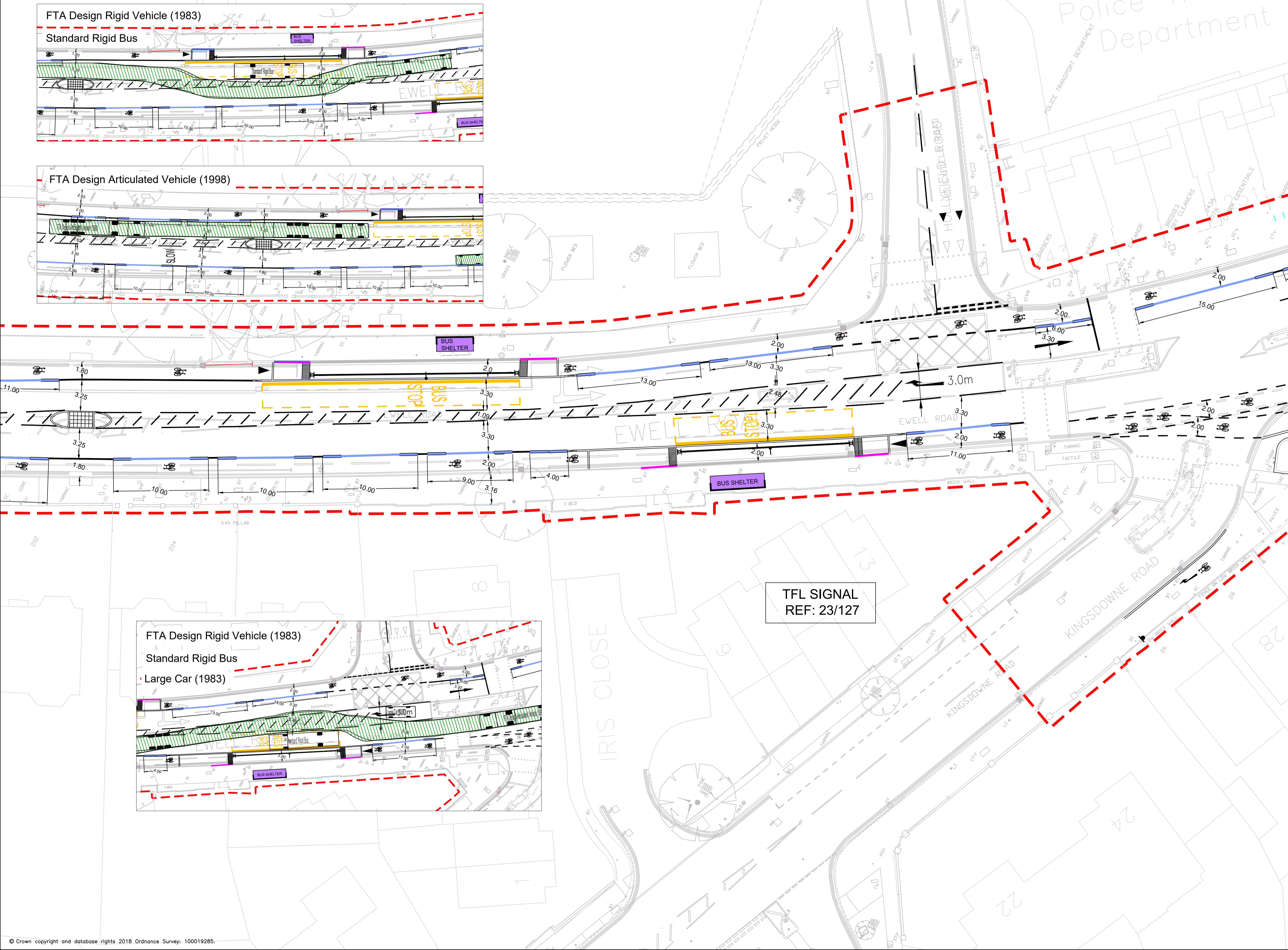
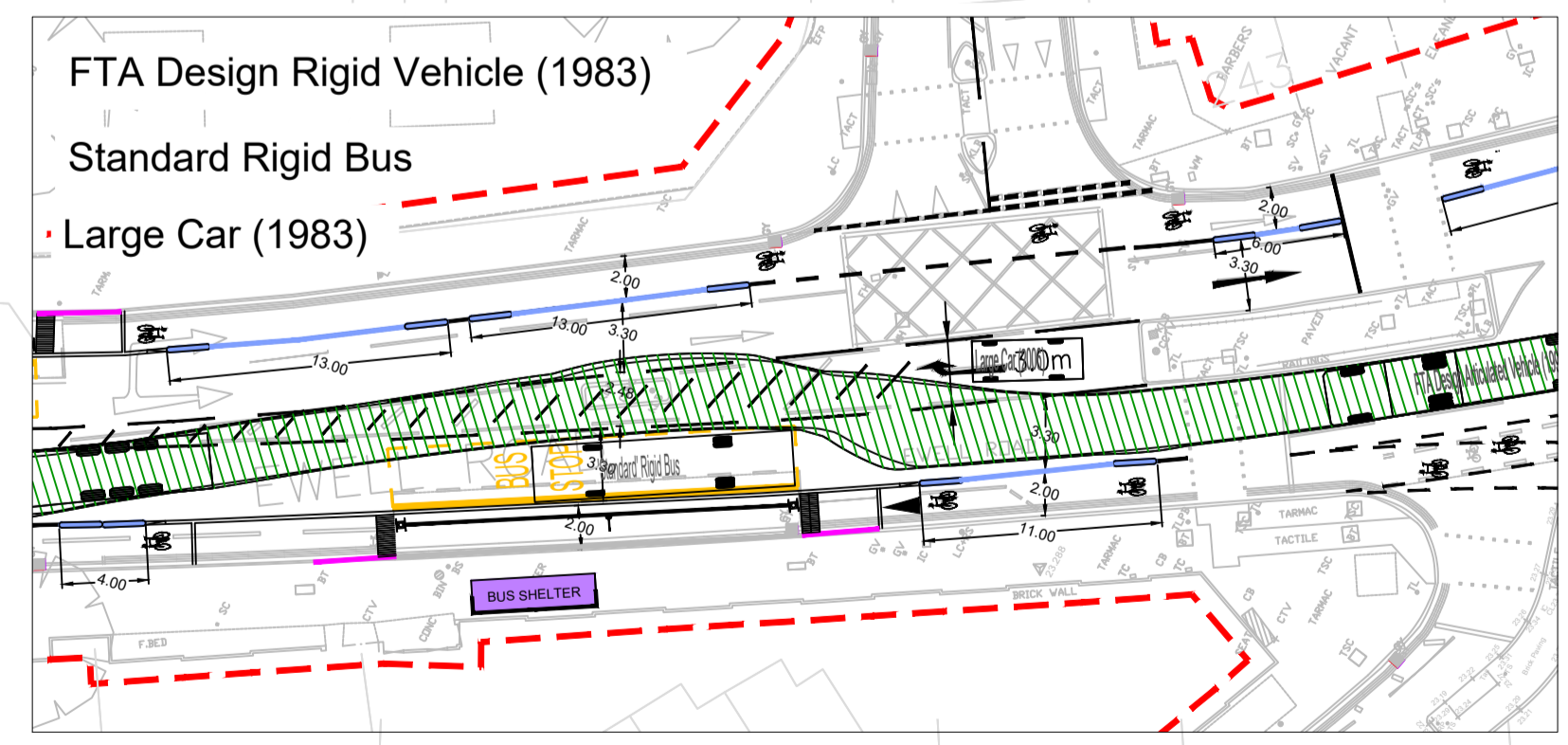
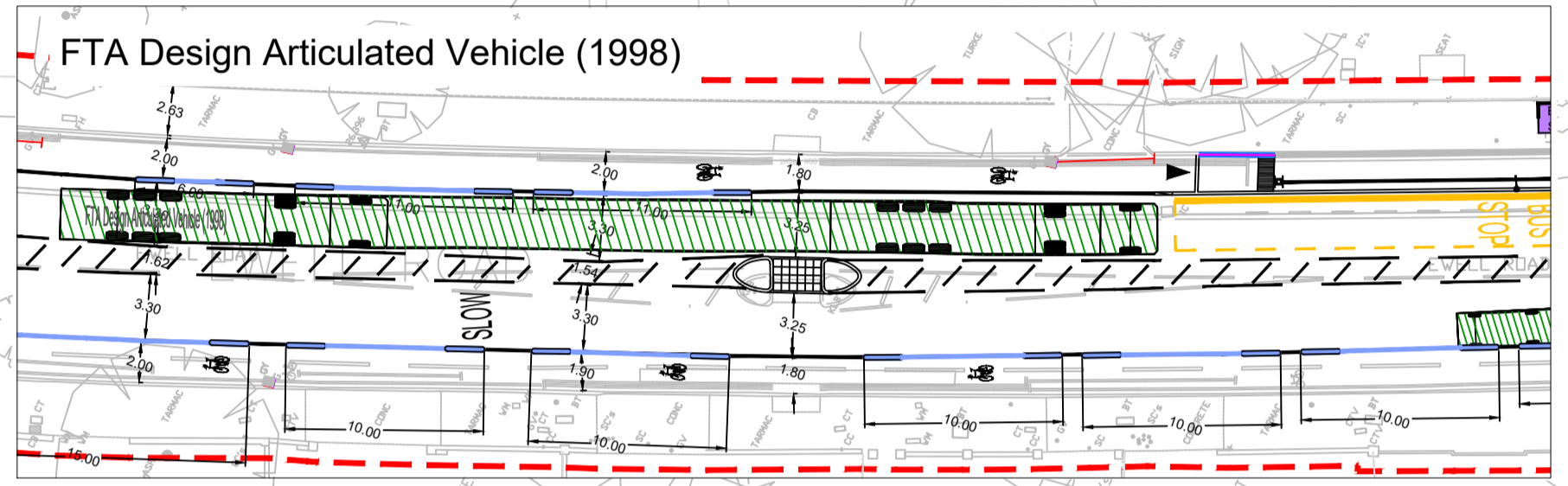
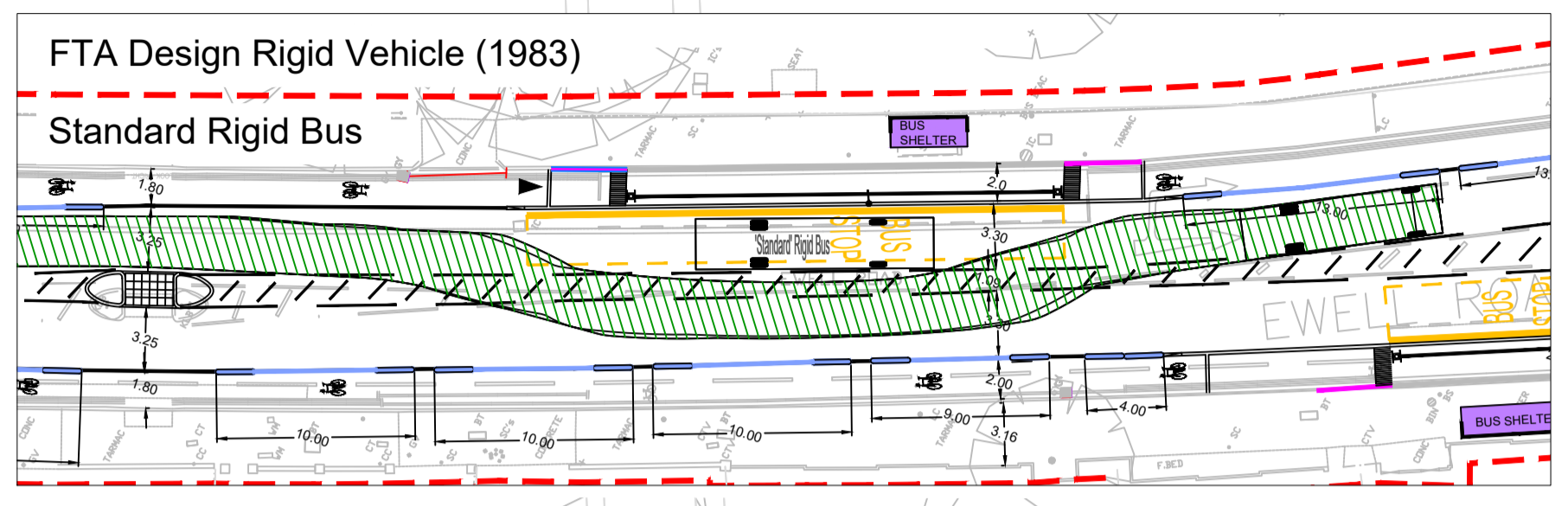


100
10
0
Millimetres

DO NOT SCALE



MEASUREMENTS NOT INCLUDED IN DIMS SHOWN :
MILESTONE WIDTH 200mm



- NOTES:**
- IT IS THE CONTRACTORS RESPONSIBILITY TO CHECK THE LOCATION OF THE EXISTING STATUTORY SERVICES PRIOR TO CONSTRUCTION, PARTICULAR ATTENTION IS DRAWN TO THE "NEW ROADS AND STREET WORKS ACT 1991"
 - THIS DRAWING IS A GENERAL ARRANGEMENT AND NOT FOR CONSTRUCTION PURPOSES
 - REFER TO THE DRAWINGS REGISTER FOR THE FULL LIST OF DETAILED DRAWINGS.
 - ALL DIMENSIONS ARE IN METRES UNLESS OTHERWISE SPECIFIED.
 - TRAFFIC SIGNAL POLES SHOWN INDICATIVE ONLY. SIGNALS TO BE DESIGNED BY TFL.
 - CYCLE STAND LOCATION TO BE CONFIRMED ON SITE BY ENGINEER.
 - NEW BUS SHELTER AND BUS STOP FLAG TO BE PROVIDED BY OTHERS. EXACT LOCATIONS TO BE AGREED ON SITE WITH TFL.
 - NEW BUFF PAVING AT BUS STOP LOCATIONS EXACT LOCATION TO BE DETERMINED BY TFL.
 - REFER TO DRAWING RBKMH-ATK-HML-EWL-DE-D-0003-STANDARD DETAILS FOR MILESTONE DETAILS.

- Key:**
- MILESTONE DEMARCATION END BLOCKS
 - MILESTONE DEMARCATION INTERNAL UNIT BLOCKS
 - NEW PCC TACTILE TRAMLINE PAVING (BUFF) 400x400x65mm
 - NEW MARSHALLS CONCRETE DEMARCATION PAVING 200x200x80mm
 - NEW KERB LINE (SILVER GREY GRANITE)
 - EXTENT OF EXISTING PRIVATE VEHICLE ACCESS POINTS
 - NEW BUS SHELTER AND BUS STOP FLAG TO BE PROVIDED BY OTHERS. EXACT LOCATIONS TO BE AGREED ON SITE WITH TFL
 - BUFF SURFACING AT BUS STOP LOCATION EXACT LOCATION TO BE DETERMINED BY TFL
 - EXISTING GULLY
 - NEW PREFORMED CONCRETE TRAPPED GULLY POT (TO NOTE 7) WITH CLASS D400 GRATING AND FRAME (TO NOTE 4). REFER TO DRAINAGE SCHEDULES FOR COVER LEVELS AND COORDINATES.

Vehicle Tracking:

Vehicle	Overall Length	Overall Width	Overall Height	Min. Body Ground Clearance	Min. Wheel Ground Clearance	Min. Side Skirt Clearance	Min. Front Overhang	Min. Rear Overhang	Kerb to Kerb Turning Radius
FTA Design Rigid Vehicle (1983)	10.00m	2.50m	2.50m	1.00m	1.00m	0.10m	1.00m	1.00m	2.00m
FTA Design Articulated Vehicle (1998)	18.00m	2.50m	2.50m	1.00m	1.00m	0.10m	1.00m	1.00m	2.00m
Standard Rigid Bus	10.00m	2.50m	2.50m	1.00m	1.00m	0.10m	1.00m	1.00m	2.00m
Large Car (1983)	4.50m	1.80m	1.50m	0.10m	0.10m	0.10m	0.50m	0.50m	2.00m

SAFETY, HEALTH AND ENVIRONMENTAL INFORMATION

In addition to the hazards/risks normally associated with the types of work detailed on this drawing, note the following:

- CONSTRUCTION
 - MAINTENANCE/CLEANING
 - DECOMMISSIONING/DEMOLITION
- It is assumed that all works will be carried out by a competent contractor working, where appropriate, to an approved method statement

Rev.	Date	Description	By	Chkd	App'd
P6	16.07.20	COVID 19 RE-DESIGN	JA	PE	CC
P5	26.06.20	COVID 19 RE-DESIGN	JA	PE	CC
P4	22.06.20	COVID 19 RE-DESIGN	JA	PE	CC
P3	19.06.20	COVID 19 RE-DESIGN	JA	PE	CC
P2	16.06.20	COVID 19 RE-DESIGN	JA	PE	CC
P1	29.05.20	COVID 19 RE-DESIGN	JA	PE	CC

Drawing Status: **COVID 19 RE-DESIGN** Suitability: **S0**

ATKINS
Euston Tower
286 Euston Road
London
NW1 3AT
Tel: +44 (0)2071 212000
Fax: +44 (0)2071 212111
Copyright © Atkins Limited (2018) www.atkinsglobal.com

Client: **THE ROYAL BOROUGH OF KINGSTON UPON THAMES**

Project Title: **KINGSTON MINI HOLLAND LOT 2**

Drawing Title: **EWELL ROAD COVID 19 RE-DESIGN SHEET 6 OF 13**

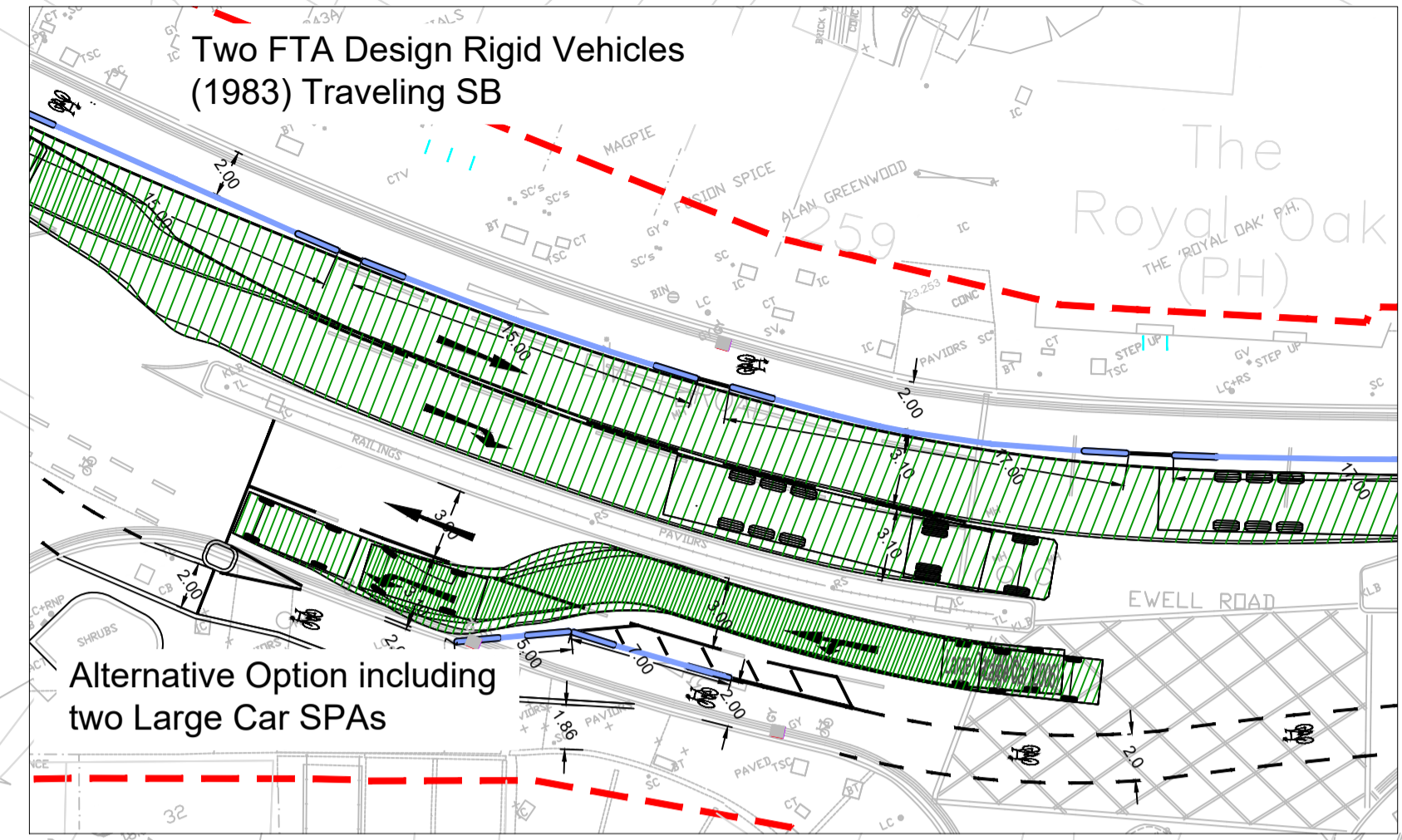
Scale	Designed	Drawn	Checked	Authorised
1:200	JA	JA	PE	CC
Original Size	Date	Date	Date	Date
A1	29.05.20	29.05.20	29.05.20	29.05.20
Drawing Number	Originator	Volume	Project Ref. No.	Revision
MHL2	ATK	HGN	5141484	
EWL	DR	D	0006	P6
Location	Type	Role	Number	

100
0 10
Millimetres

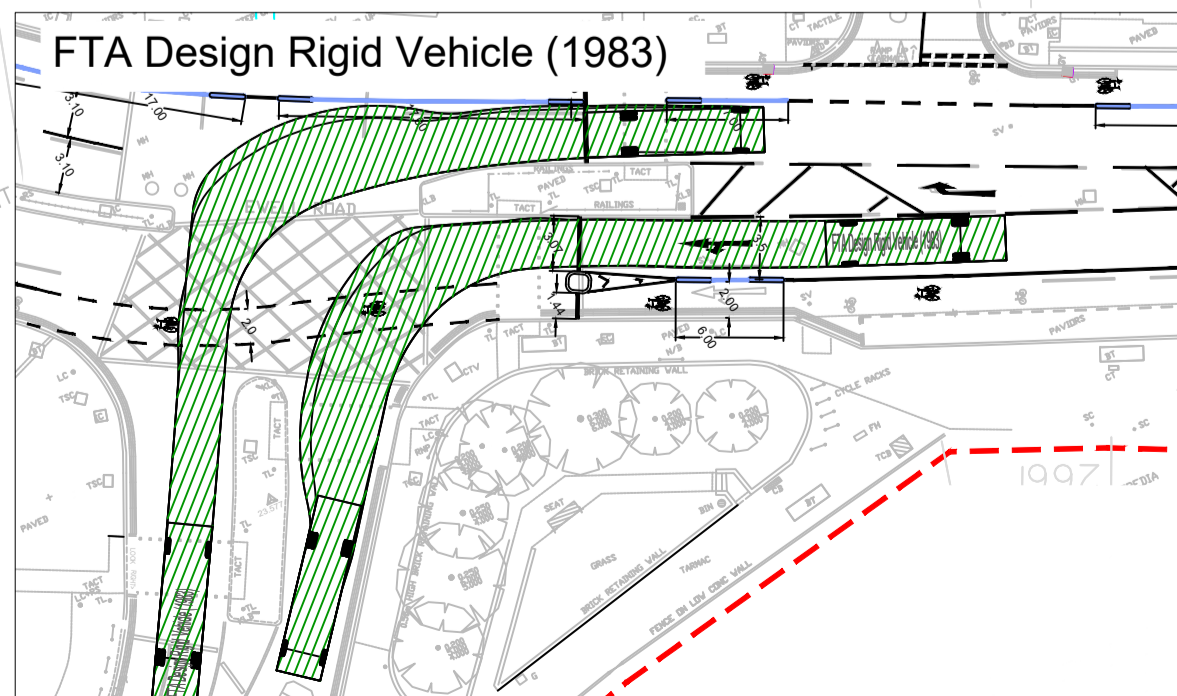
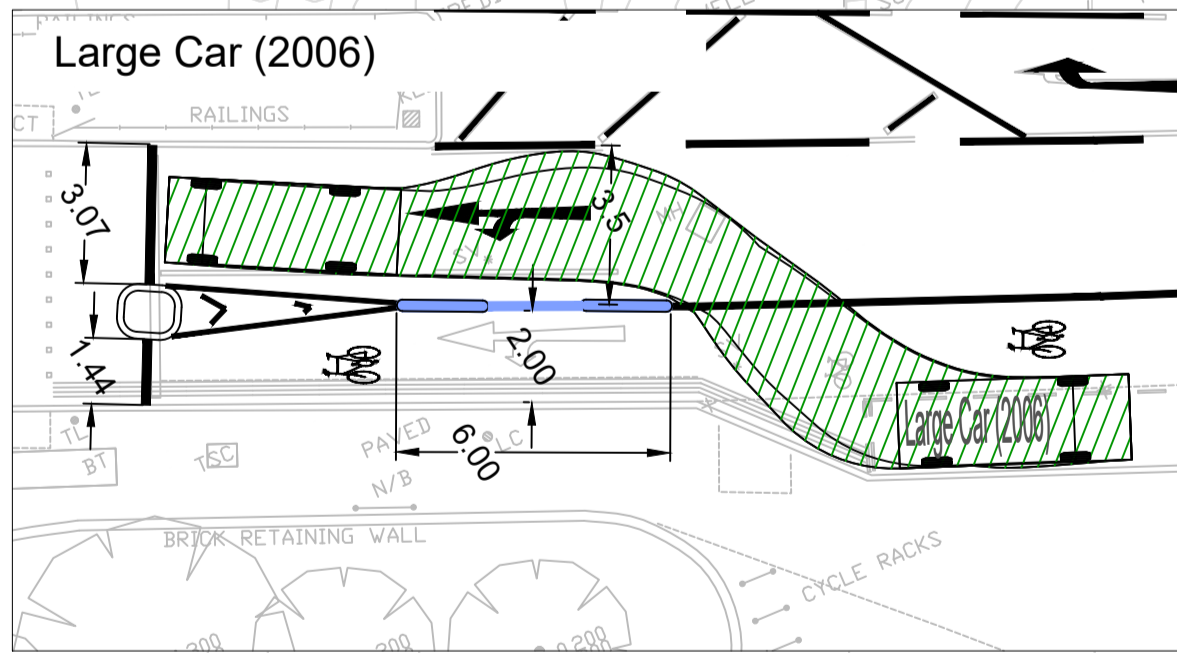
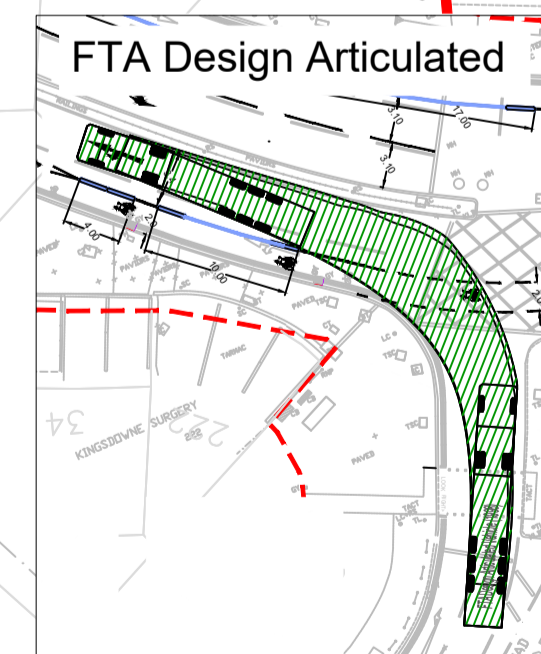
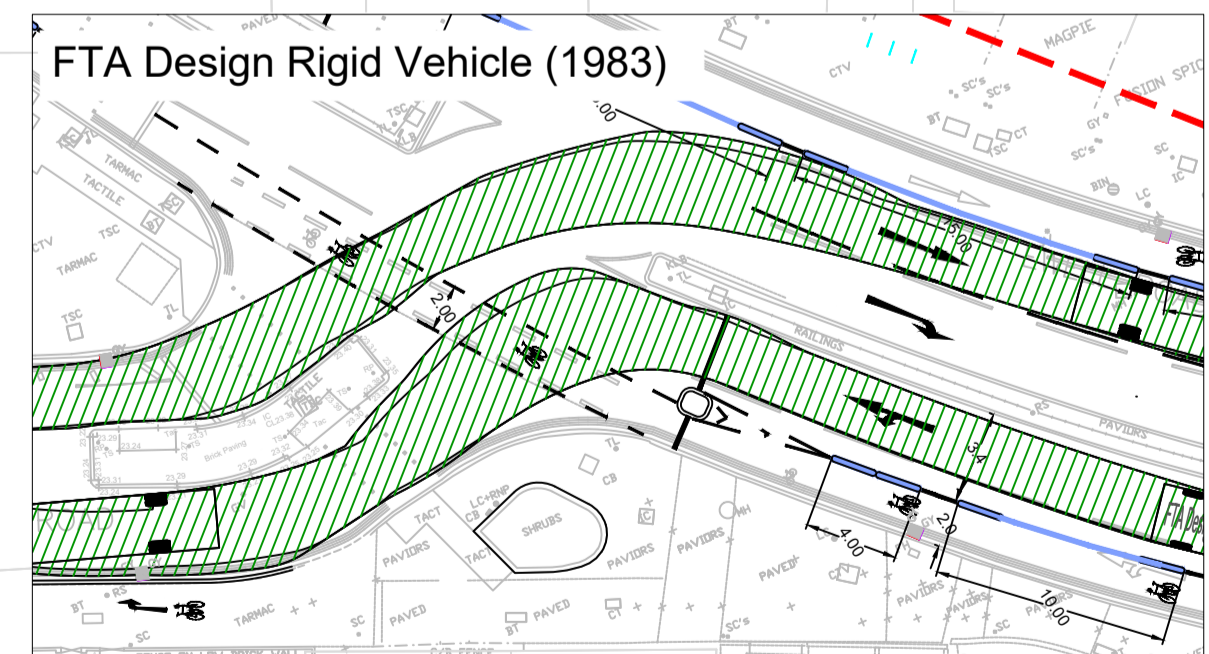
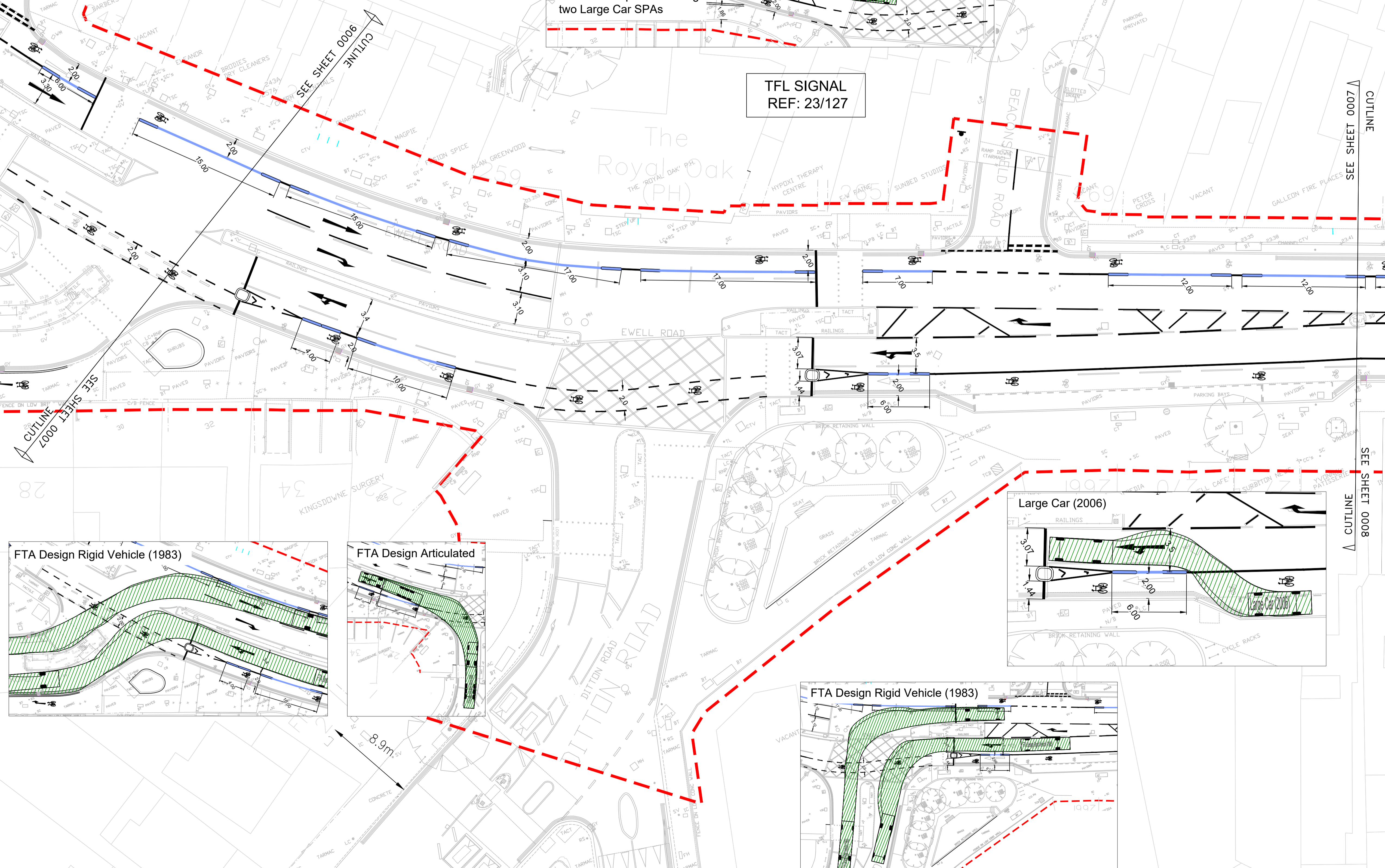
DO NOT SCALE



MEASUREMENTS NOT INCLUDED IN DIMS SHOWN :
MILESTONE WIDTH 200mm



TFL SIGNAL
REF: 23/127



- NOTES:**
- IT IS THE CONTRACTORS RESPONSIBILITY TO CHECK THE LOCATION OF THE EXISTING STATUTORY SERVICES PRIOR TO CONSTRUCTION, PARTICULAR ATTENTION IS DRAWN TO THE "NEW ROADS AND STREET WORKS ACT 1991"
 - THIS DRAWING IS A GENERAL ARRANGEMENT AND NOT FOR CONSTRUCTION PURPOSES
 - REFER TO THE DRAWINGS REGISTER FOR THE FULL LIST OF DETAILED DRAWINGS.
 - ALL DIMENSIONS ARE IN METRES UNLESS OTHERWISE SPECIFIED.
 - TRAFFIC SIGNAL POLES SHOWN INDICATIVE ONLY. SIGNALS TO BE DESIGNED BY TFL.
 - CYCLE STAND LOCATION TO BE CONFIRMED ON SITE BY ENGINEER.
 - NEW BUS SHELTER AND BUS STOP FLAG TO BE PROVIDED BY OTHERS. EXACT LOCATIONS TO BE AGREED ON SITE WITH TFL.
 - NEW BUFF PAVING AT BUS STOP LOCATIONS EXACT LOCATION TO BE DETERMINED BY TFL.
 - REFER TO DRAWING RBKMH-ATK-HML-EWL-DE-0003-STANDARD DETAILS FOR MILESTONE DETAILS.

- Key:**
- MILESTONE DEMARCATION END BLOCKS
 - MILESTONE DEMARCATION INTERNAL UNIT BLOCKS
 - NEW PCC TACTILE TRAMLINE PAVING (BUFF) 400x400x65mm
 - NEW MARSHALLS CONCRETE DEMARCATION PAVING 200x200x80mm
 - NEW KERB LINE (SILVER GREY GRANITE)
 - EXTENT OF EXISTING PRIVATE VEHICLE ACCESS POINTS
 - NEW BUS SHELTER AND BUS STOP FLAG TO BE PROVIDED BY OTHERS. EXACT LOCATIONS TO BE AGREED ON SITE WITH TFL
 - BUFF SURFACING AT BUS STOP LOCATION EXACT LOCATION TO BE DETERMINED BY TFL
 - EXISTING CULLY
 - NEW PREFORMED CONCRETE TRAPPED GULLY POT (TO NOTE 7) WITH CLASS D400 GRATING AND FRAME (TO NOTE 4). REFER TO DRAINAGE SCHEDULES FOR COVER LEVELS AND COORDINATES

Vehicle Tracking:

Vehicle Type	Overall Length	Overall Width	Overall Height	Overhead Clearance	Min Body Ground Clearance	Min Wheel Ground Clearance	Min Wheel Height	Min Wheel Spacing	Min Wheel Turning Radius
FTA Design Rigid Vehicle (1983)	10.00m	2.00m	2.50m	3.00m	0.10m	0.10m	0.10m	0.10m	2.800m
Large Car (2006)	4.50m	1.80m	1.50m	2.00m	0.10m	0.10m	0.10m	0.10m	2.800m
Standard Right Bus	12.00m	2.50m	3.00m	3.00m	0.10m	0.10m	0.10m	0.10m	2.800m
FTA Design Articulated Vehicle (1983)	18.00m	2.50m	3.00m	3.00m	0.10m	0.10m	0.10m	0.10m	2.800m

SAFETY, HEALTH AND ENVIRONMENTAL INFORMATION

In addition to the hazards/risks normally associated with the types of work detailed on this drawing, note the following:

- CONSTRUCTION
- MAINTENANCE/CLEANING
- DECOMMISSIONING/DEMOLITION

It is assumed that all works will be carried out by a competent contractor working, where appropriate, to an approved method statement

Rev.	Date	Description	By	Chkd	App'd
P6	16.07.20	COVID 19 RE-DESIGN	JA	PE	CC
P5	26.06.20	COVID 19 RE-DESIGN	JA	PE	CC
P4	22.06.20	COVID 19 RE-DESIGN	JA	PE	CC
P3	19.06.20	COVID 19 RE-DESIGN	JA	PE	CC
P2	16.06.20	COVID 19 RE-DESIGN	JA	PE	CC
P1	29.05.20	COVID 19 RE-DESIGN	JA	PE	CC

Drawing Status: **COVID 19 RE-DESIGN** Suitability: **S0**

ATKINS Euston Tower
286 Euston Road
London
NW1 3AT

Tel: +44 (0)2071 212000
Fax: +44 (0)2071 212111
Copyright © Atkins Limited (2018) www.atkinsglobal.com



Project Title: **KINGSTON MINI HOLLAND LOT 2**

Drawing Title: **EWELL ROAD
COVID 19 RE-DESIGN
SHEET 7 OF 13**

Scale	Designed	Drawn	Checked	Authorised
1:200	JA	JA	PE	CC
Original Size	Date	Date	Date	Date
A1	29.05.20	29.05.20	29.05.20	29.05.20
Drawing Number	Originator	Volume	Project Ref. No.	Revision
MHL2 EWL	- ATK - DR	- HGN - D	5141484	P6
Location	Type	Role	Number	